



Certificate of Analysis

Customer:
 Modern Remedies LLC
 7109 Waterworks Hill Rd SE
 Uhrichsville, OH 44683

Sample ID: **220301027**
 Order Number: **CB220301008**
 Sample Name: **Vanilla Caramel**

Collected Date:
 Received Date: **3/1/2022**
 COA Released: **3/3/2022**

External Sample ID:
 Batch Number: **021622MR211022VC**
 Product Type: **Other**
 Sample Type: **Other**

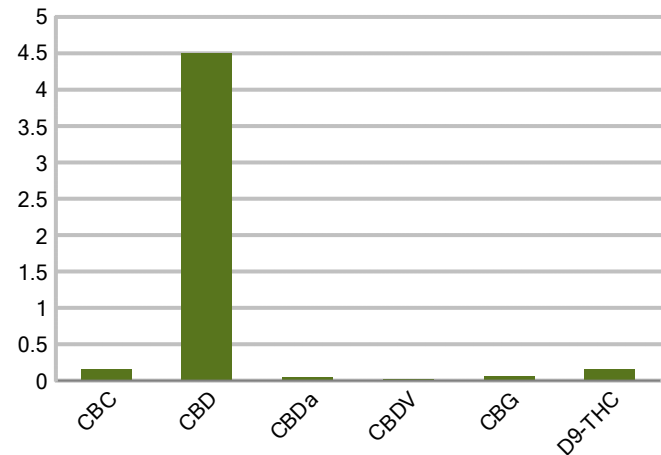
Comments:

CANNABINOID PROFILE

Analyte	LOQ (%)	% weight	mg/g
CBC	0.01	0.164	1.639
CBD	0.01	4.504	45.04
CBDa	0.01	0.043	0.432
CBDV	0.01	0.017	0.171
CBG	0.01	0.055	0.547
CBGa	0.01	ND	ND
CBN	0.01	ND	ND
d8-THC	0.01	ND	ND
d9-THC	0.01	0.156	1.557
THCa	0.01	ND	ND
Total Cannabinoids		4.939	49.39
Total Potential THC		0.156	1.557
Total Potential CBD		4.542	45.42
Total Potential CBG		0.055	0.547



Cannabinoids (% weight)



Ratio of Total Potential CBD to Total Potential THC 29.12 : 1

Ratio of Total Potential CBG to Total Potential THC 0.35 : 1

*Total Cannabinoids refers to the sum of all cannabinoids detected.

*Total Potential CBD = (0.877 x CBDa) + CBD. *Total Potential THC = (0.877 x THCa) + THC. *Total Potential CBG = (0.877 x CBGa) + CBG.

*Total Potential THC/CBD are calculated to take into account the loss of an acid group during decarboxylation.



PJLA
Testing
Accreditation #109588

Authorized Signature

Laboratory Manager

Jamie Hobgood

03/03/2022 8:51 AM

DATE

This product has been tested by CannaBusiness Laboratories using validated testing methodologies and a quality system. Values reported relate only to the product tested. CannaBusiness Laboratories makes no claims as to the efficacy, safety or other risks associated with any detected or non-detected levels of any compounds reported herein. This Certificate shall not be reproduced except in full, without the written permission of CannaBusiness Laboratories. Uncertainty information is available on request. Photo is of sample received by the lab and may vary from final packaging. The results apply to the sample as received. ISO/IEC 17025:2017 Accredited.



Sample ID: 220301027
Sample Name: Vanilla Caramel
Sample Type: Other

Certificate of Analysis

Customer

Modern Remedies LLC
7109 Waterworks Hill Rd SE
Uhrichsville, OH 44683



Overall Batch Results	
Pesticide	Moisture Content
Potency	Water Activity
Mycotoxins	Heavy Metals
Microbial Screen	Residual Solvents
Terpenoids	

Sample Name: Vanilla Caramel
Sample ID: 220301027
Product Type: Other
Sample Type: Other
Collected Date:
Received Date: 03/01/2022
Batch Number: 021622MR211022VC
Batch Size:
Sample Size:
COA released: 03/03/2022 8:51 AM

Potency (mg/g)

Date Tested: 03/02/2022 Method: CB-SOP-028
Instrument:

0.156 % Total THC	4.542 % Total CBD	4.939 % Total Cannabinoids	49.39 mg/g Total Cannabinoids
-----------------------------	-----------------------------	--------------------------------------	---

Analyte	Result	Units	LOQ	Result	Units
CBC (Cannabichromene)	0.164	%	0.010	1.639	mg/g
CBD (Cannabidiol)	4.504	%	0.010	45.04	mg/g
CBDa (Cannabidiolic Acid)	0.043	%	0.010	0.432	mg/g
CBDV (Cannabidivarin)	0.017	%	0.010	0.171	mg/g
CBG (Cannabigerol)	0.055	%	0.010	0.547	mg/g
CBGa (Cannabigerolic Acid)	ND	%	0.010	ND	mg/g
CBN (Cannabinol)	ND	%	0.010	ND	mg/g
D8-THC (D8-Tetrahydrocannabinol)	ND	%	0.010	ND	mg/g
D9-THC (D9-Tetrahydrocannabinol)	0.156	%	0.010	1.557	mg/g
THCa (Tetrahydrocannabinolic Acid)	ND	%	0.010	ND	mg/g



Authorized Signature


Laboratory Manager

Jamie Hobgood

03/03/2022 8:51 AM

Date Time

NT = Not tested, ND = Not detected; LOQ = Limit of Quantitation; <LOQ = Detected; >ULOL = Above upper limit of linearity; CFU/g = Colony forming units per 1 gram; TNTC = Too numerous to count

CannaBusiness Laboratories
License # P-0059: (859)-514- 6999 <https://www.cannabusinesslabs.us>

This product has been tested by CannaBusiness Laboratories using validated testing methodologies and a quality system. Values reported relate only to the product tested. CannaBusiness Laboratories makes no claims as to the efficacy, safety, or other risks associated with any detected or non-detected levels of any compounds reported herein. This Certificate shall not be reproduced except in full, without the written permission of CannaBusiness Laboratories. Uncertainty information is available on request. Photo is of sample received by the lab and may vary from final packaging. The results apply to the sample as received. ISO/IEC 17025:2017 Accredited.